

REV.	DESCRIPTION	DATE	DRAFTER	APPROVER
A1	DWG.REL	2020.05.22	DENG	JIN

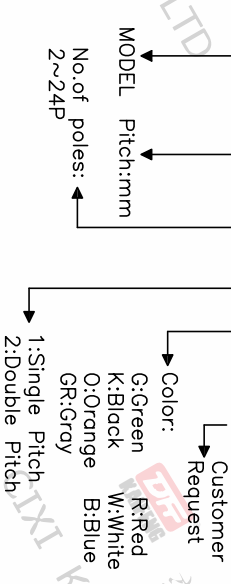
- Material
  - Screws : M2.5 steel, Zinc plated,
  - \*\_slot type
  - Housing : PA66, UL94V-0
  - Clamp : Copper alloy, Ni plated
  - Pin header : Copper alloy, Tin plated
- Electrical
 

UL	IEC
Rated voltage : 300V	250V
Rated current : 15A	24A
Contact Resistance: 20mΩ	
Insulation resistance: 500MΩ/DC500V	
Withstanding Voltage : AC2000V/1min	
Wire range: 22-14AWG	2.5mm <sup>2</sup>

- Mechanical
  - Operating temperature:-40°C~+105°C
  - Soldering temperature:250°C±5/5sec
  - Torque: 0.4N.m (3.54Lb.in)
  - Strip length: 4.5-5mm
- RoHS compliance

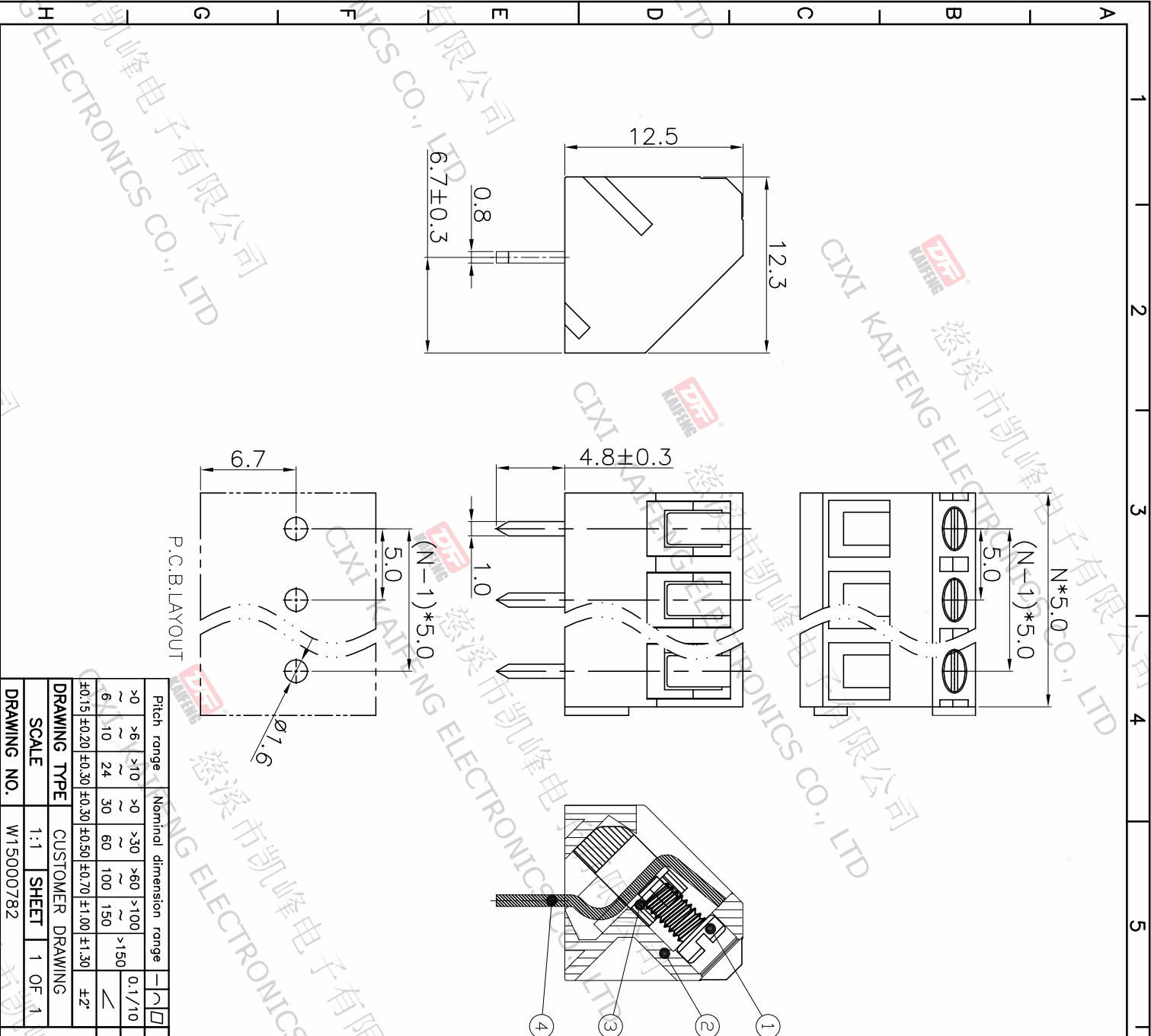
HOW TO ORDER

KF330-5.0-XXP-1 X-XXXXX



Color:  
G:Green  
K:Black  
O:Orange  
GR:Gray  
R:Red  
W:White  
B:Blue

Customer Request  
1:Single Pitch  
2:Double Pitch



P.C.B.LAYOUT

Pitch range	Nominal dimension range	PROJECTION	UNIT
>0	>0	0.1/10	mm
>6	>10		
~	~		
6	10		
~	~		
10	24		
~	~		
24	30		
~	~		
30	60		
~	~		
60	100		
~	~		
100	150		
~	~		
150	>150		
±2'			
±0.15	±0.20		
±0.30	±0.30		
±0.50	±0.50		
±0.70	±1.00		
±1.30	±1.30		

DRAWING TYPE	CUSTOMER DRAWING
SCALE	1:1
SHEET	1 OF 1
DRAWING NO.	W15000782

**DFE** 慈溪市凯峰电子有限公司  
CIXI KAIFENG ELECTRONICS CO.,LTD

TITLE: KF330-5.0-XXP-1X  
SERIES: KF330  
SHEET SIZE: A4