

REV.	DESCRIPTION	DATE	DRAFTER	APPROVER
A1	DWG.REL	2020.05.19	DENG	JIN

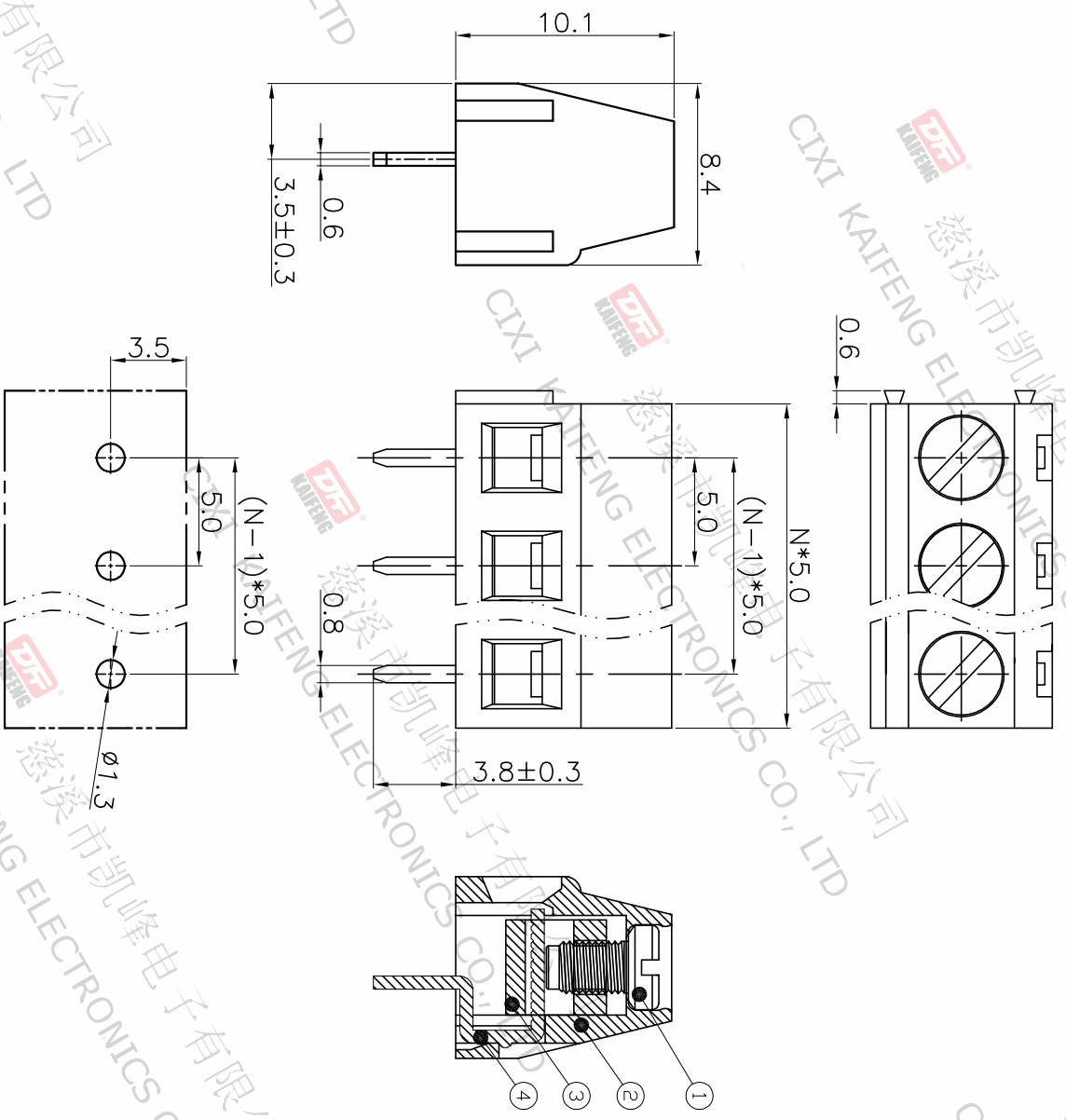
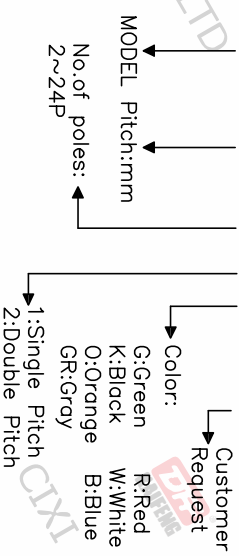
- Material  
 ①Screws : M3.0 steel, Zinc plated,  
 \*-\* slot type  
 ②Housing : PA66, UL94V-0  
 ③Clamp : Copper alloy, Ni plated  
 ④Pin header : Copper alloy, Tin plated

- Electrical  
 UL IEC  
 Rated voltage : 300V 250V  
 Rated current : 12A 15A  
 Contact resistance : 20mΩ(Max)  
 Insulation resistance: 500MΩ/DC500V  
 Withstanding Voltage : AC2000V/1min  
 Wire range: 26-14AWG 2.5mm<sup>2</sup>

- Mechanical  
 Operating temperature:-40°C~+105°C  
 Soldering temperature:250°C±5/5sec  
 Torque: 0.5N.m (4.43lb.in)  
 Strip length: 5-6mm

• RoHS compliance

HOW TO ORDER  
 KF127-5.0-XXP-1 X-XXXXX



Pitch range	Nominal dimension range	PROJECTION	UNIT
>0	>30	□	mm
~6	~30	□	mm
~10	~60	□	mm
~24	~100	□	mm
~30	~150	□	mm
±0.15	±0.30	□	mm
±0.20	±0.50	□	mm
±0.30	±0.70	□	mm
±1.00	±1.30	□	mm
±2*		□	mm

DRAWING TYPE	CUSTOMER DRAWING
SCALE	1:1
SHEET	1 OF 1
DRAWING NO.	W15000462

PROJECTION	TITLE
UNIT	KF127-5.0-XXP-1X
SHEET SIZE	A4
SERIES	KF127

**DF** 慈溪市凯峰电子有限公司  
 CIXI KAIFENG ELECTRONICS CO.,LTD

